

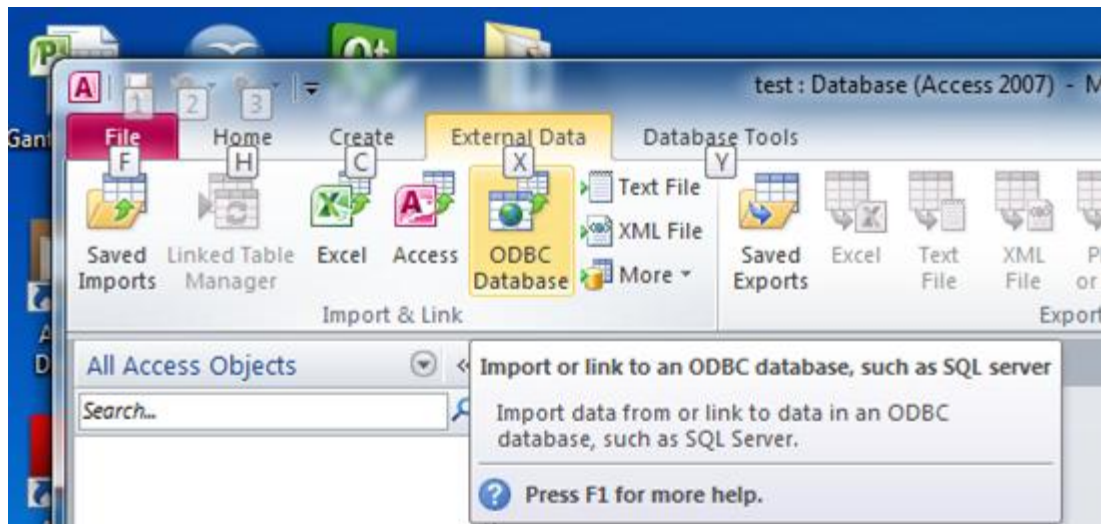
Käyttöliittymä (prototyyppi) MS Accessilla

Jouni Huotari

11.11.2010

Luo tyhjä tietokanta Accessilla

- ... ja luo ODBC-yhteys esim. MySQL-tietokantaan





Select the source and destination of the data

Specify how and where you want to store the data in the current database.

Import the source data into a new table in the current database.

If the specified object does not exist, Access will create it. If the specified object already exists, Access will append a number to the name of the imported object. Changes made to source objects (including data in tables) will not be reflected in the current database.

Link to the data source by creating a linked table.

Access will create a table that will maintain a link to the source data. Changes made to the data in Access will be reflected in the source and vice versa.

OK

Cancel

Select Data Source


File Data Source | **Machine Data Source**

Data Source Name	Type	Description
dBASE Files	User	
Excel Files	User	
MS Access Database	User	
testi	User	MySQL-test
Visio Database Samples	User	

[New...](#)

A Machine Data Source is specific to this machine, and cannot be shared. "User" data sources are specific to a user on this machine. "System" data sources can be used by all users on this machine, or by a system-wide service.

Create New Data Source



Select a type of data source:


User Data Source (Applies to this machine only)

System Data Source (Applies to this machine only)

Selecting User Data Source creates a data source which is specific to this machine, and visible only to you.

[< Back](#)
[Next >](#)
[Cancel](#)

Create New Data Source




Select a driver for which you want to set up a data source.

Name
Microsoft Paradox Driver (*.db)
Microsoft Paradox-Treiber (*.db)
Microsoft Text Driver (*.txt; *.csv)
Microsoft Text-Treiber (*.txt; *.csv)
Microsoft Visual FoxPro Driver
Microsoft Visual FoxPro-Treiber
MySQL ODBC 5.1 Driver
SQL Server
SQL Server Native Client 10.0

[< Back](#)
[Next >](#)
[Cancel](#)

Create New Data Source



When you click Finish, you will create the data source which you have just configured. The driver may prompt you for more information.

User Data Source
Driver: MySQL ODBC 5.1 Driver

[< Back](#)
[Finish](#)
[Cancel](#)

MySQL Connector/ODBC Data Source Configuration

MySQL Connector/ODBC

Connection Parameters

Data Source Name:

Description:

TCP/IP Server: Port:

Named Pipe:

User:

Password:

Database:

Link Tables

Tables

- dept
- emps
- sdept

Save password

Select Unique Record Identifier

Fields in table 'sdept':

- DEPT
- MANAGER
- CODE

To ensure data integrity and to update records, you must choose a field or fields that uniquely identify each record. Select up to ten fields.

File Home Create External Data Database Tools

Import & Link: Saved Imports, Linked Table Manager, Excel, Access, ODBC Database, More

Export: Saved Exports, Excel, Text File, XML File, PDF or XPS, E-mail, More

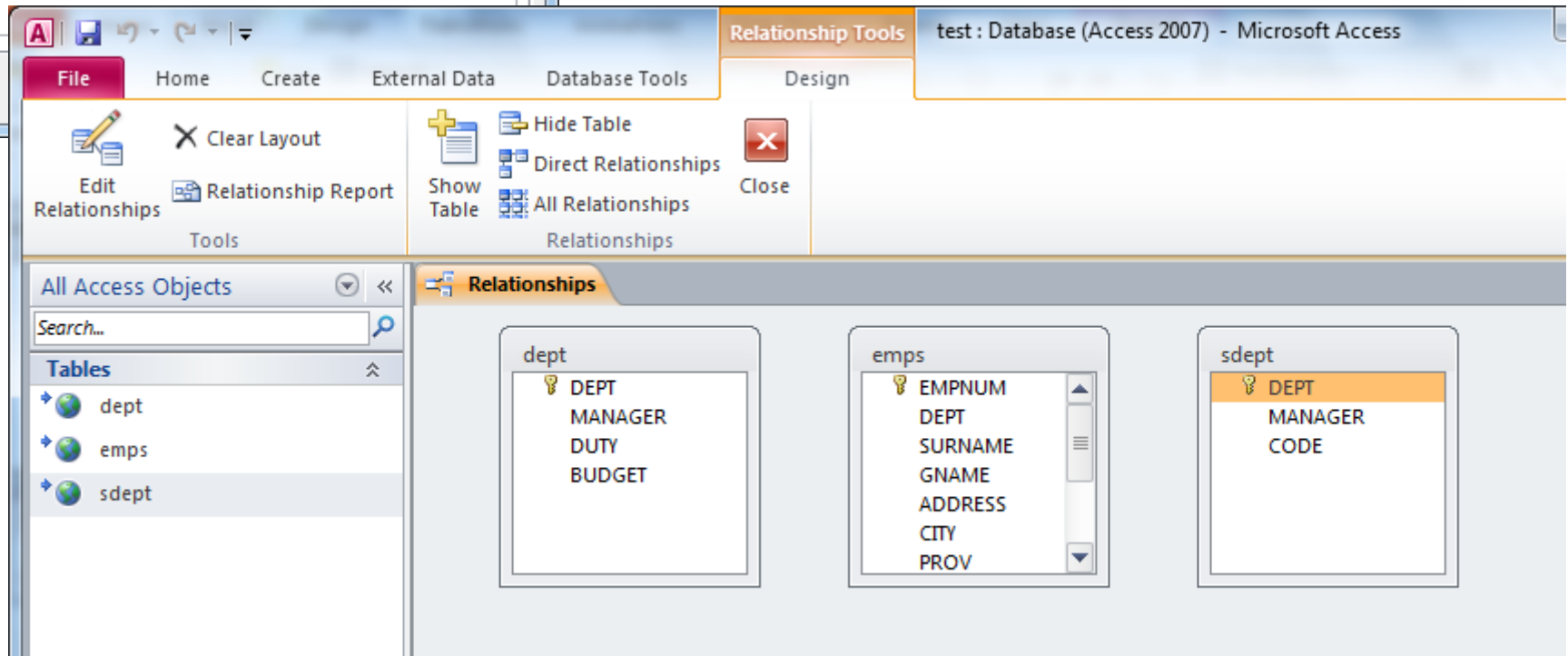
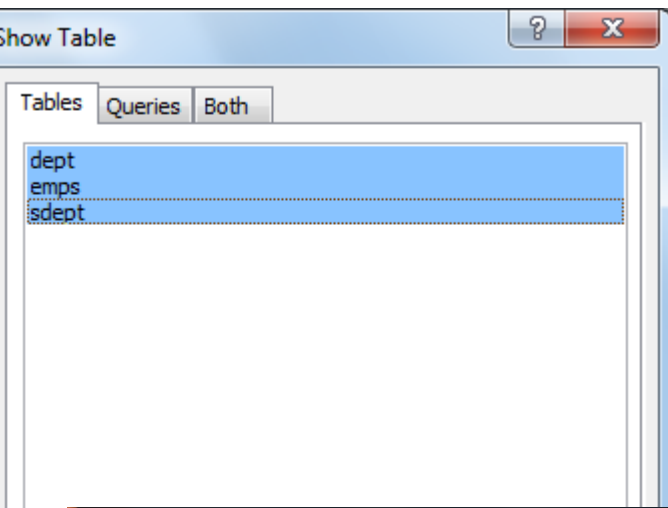
Collect Data: Create E-mail, Manage Replies

All Access Objects

Search...

Tables

- dept
- emps
- sdept



File Home Create External Data Database Tools Design

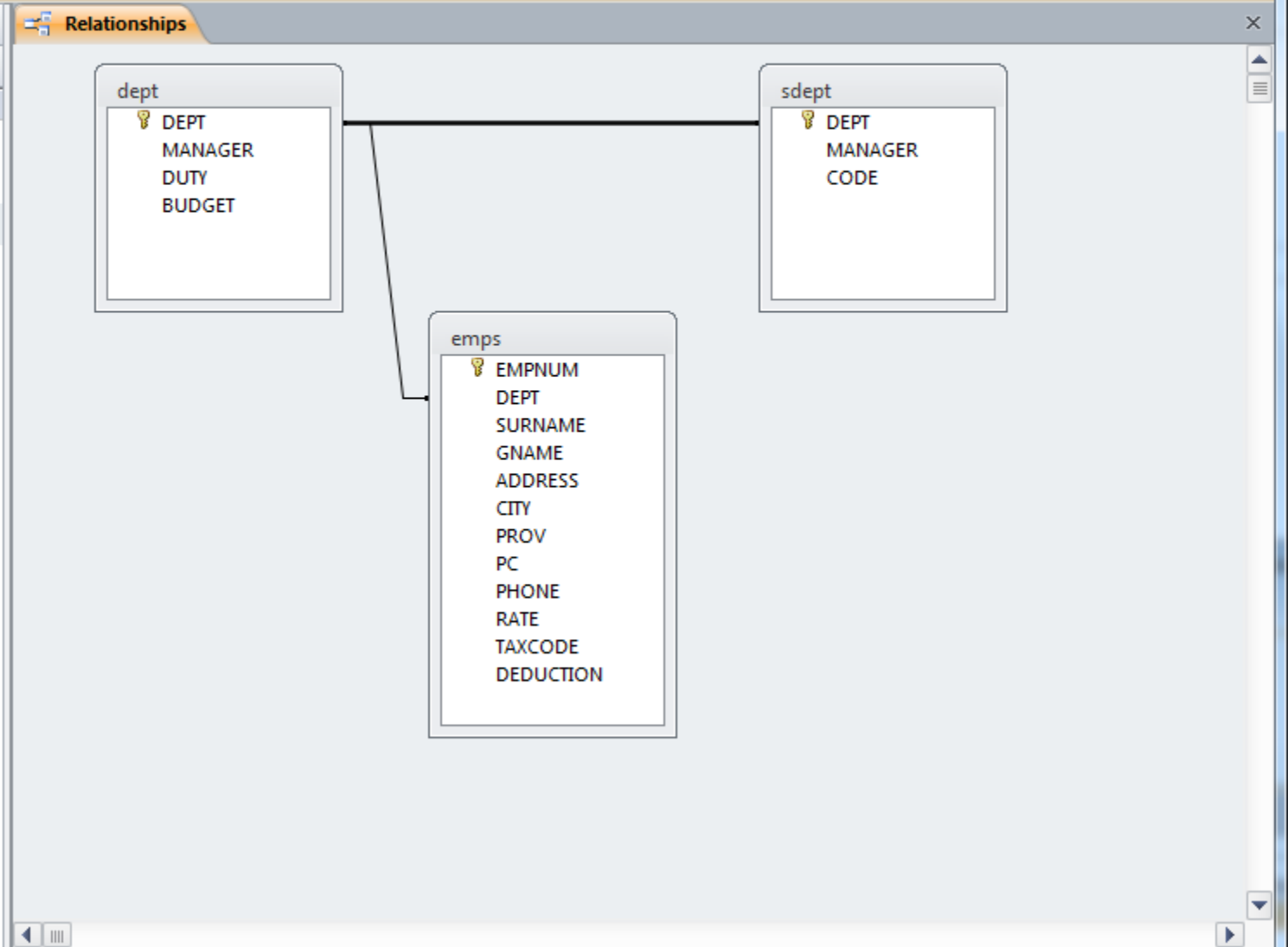
Edit Relationships Relationship Report Clear Layout Hide Table Direct Relationships All Relationships Show Table Relationships Close

All Access Objects

Search...

Tables

- dept
- emps
- sdept



Create Form

Käyttöliittymä (prototyyppi) MS Accessilla - Microsoft PowerPoint

test : Database (Access 2007) - Microsoft Access

File Home Create External Data Database Tools **Relationship Tools** Design

Application Parts Templates Table Table Design Tables SharePoint Lists Queries Query Wizard Query Design Form Form Design Forms Blank Form More Forms Form Wizard Navigation Labels Report Report Design Reports Report Wizard Labels Macro

All Access Objects Search... Relationships **Form**

Tables
dept
emps
sdept

dept
DEPT
MAN
DUT
BUDGET

sdept
DEPT
MANAGER
CODE

emps
EMPNUM
DEPT
SURNAME
GNAME
ADDRESS
CITY
PROV
PC
PHONE
RATE
TAXCODE
DEDUCTION

Create a form that lets you enter information for one record at a time.
Press F1 for more help.

Views Themes

View Themes Fonts

Themes

Controls

ab| Aa XXXX

Insert Image

Header / Footer

Logo Title Date and Time

Tools

Add Existing Fields Property Sheet Tab Order Subform in View Code Convert Fo

All Access Objects

Search...

Tables

- dept
- emps
- sdept

Forms

- emps subform

Relationships dept

Form Header

dept

Detail

DEPT	DEPT
MANAGER	MANAGER
DUTY	DUTY
BUDGET	BUDGET

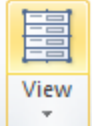
emps subform

Form Header

Detail

EMPNUM	EMPNUM
DEPT	DEPT
SURNAME	SURNAME
GNAME	GNAME
ADDRESS	ADDRESS

File Home Create External Data Database Tools



Views



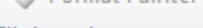
Paste



Cut



Copy



Format Painter

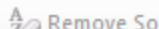


Filter

A-Z Ascending

Z-A Descending

Remove Sort



Toggle Filter

Selection

Advanced

Toggle Filter



Refresh All

New

Save

Delete

More

Totals

Spelling

More



Find

Replace

Go To

Select

B I U A ab

Text Formatting

All Access Objects

Search...

Tables

dept

emps

sdept

Forms

emps subform

Relationships dept

dept

DEPT



MANAGER

SMITH A

DUTY

ACCOUNTING

BUDGET

100000

emps subform

EMPNUM	DEPT	SURNAME	GNAME	ADDRESS	CITY
1	A	KOO	SARA	234 WEST ST	BANFF
10	A	SMITH	ALICE	123 MAIN ST	EDMON
24	A	RINAS	ROB	521 ARMSTRONG DR	EDMON
25	A	ALLAN	RANDY	516 ARMSTRONG CRES	EDMON
33	A	WALSH	BILL	135 COTTON AVE	YORK
48	A	GROSSER	COLIN	520 PARIS ST	EDMON
49	A	NORMAN	VINCE	701 MORGAN CRES	EDMON
61	A	THOMPSON	BRAD	105 MAIN ST	EDMON
72	A	FLETCHER	RENE	623 WEST ST	EDMON
73	A	CURRY	PETER	104 PARIS ST	EDMON
*	A				

Record: 1 of 52 No Filter Search

Form View