



LabraNet

Remote access guide

INTRODUCTION.....	2
VPN Connection.....	2
Windows 10.....	3
Windows 10 - additional settings	6
Mac OS X.....	11
Linux (Graphical)	18
Advanced routing.....	23
Windows	23
Mac OS X.....	24
Linux (Graphical)	25
Accessing Shares.....	26
Windows	27
Mac OS X.....	28
Linux (Graphical)	30
Linux (Command line).....	32



LabraNet

Remote access guide

INTRODUCTION

This is a guide for using LabraNet services remotely through a VPN connection. First part of the guide explains how to connect to LabraNet VPN with step-by-step instructions for the most common operating systems. Second part includes guides for accessing your home folder.

VPN Connection

You need a LabraNet user account for the connection.

Generic options for the connection are:

Connection type: SSTP

Authentication type: MS-CHAPv2 (Linux/macOS) EAP-MSCHAPv2 (Win)

VPN server address: sslvpn.labranet.jamk.fi (should resolve to 195.148.26.226)

Firewall:

If for some reason your firewall blocks web traffic, you need to allow outbound TLS/SSL connections (TCP port 443)

User information:

Domain: LABRANET

User name: Your LabraNet username

Password: Your LabraNet password

Windows 10

The easiest way to create the VPN connection is to use the *Change virtual private networks* –application. Open the start menu and type *vpn* in the search window.

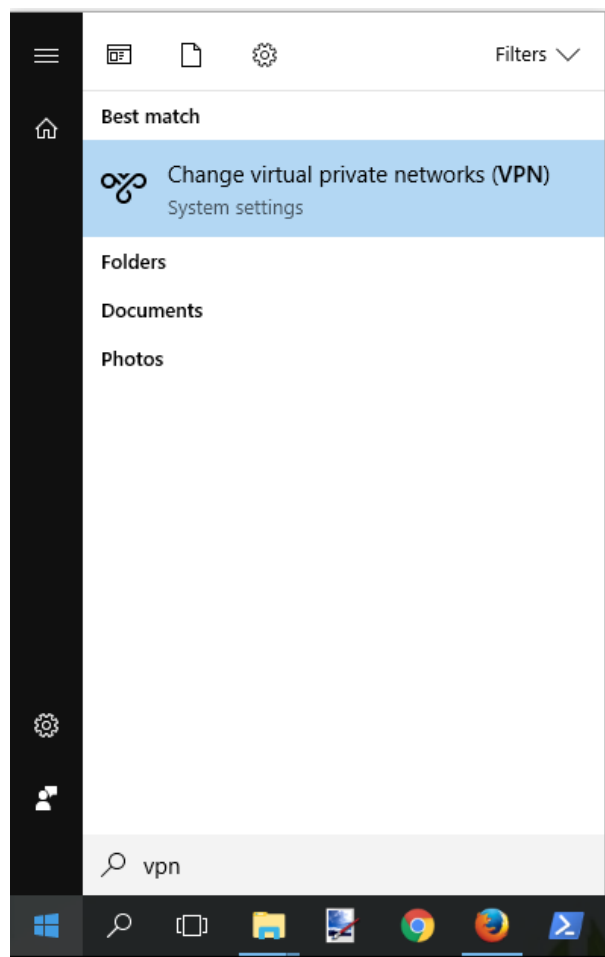
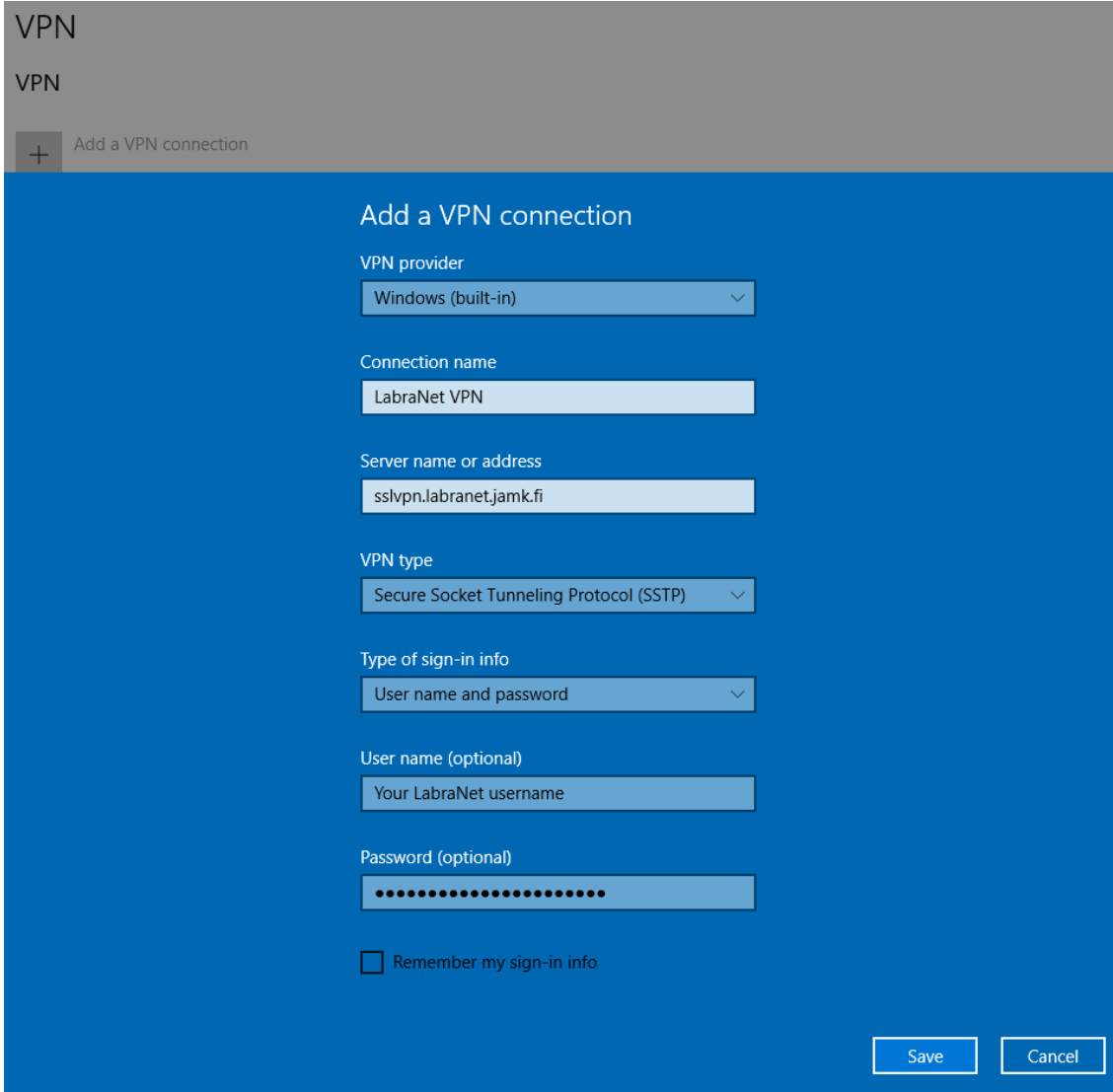


Figure 1. Change virtual private networks

Click *Add a VPN connection* in the application and fill in the connection information.



The screenshot shows a Windows-style dialog box titled "Add a VPN connection" with a blue background. At the top left, there is a "VPN" header and a button with a plus sign and the text "Add a VPN connection". The form contains the following fields:

- VPN provider:** A dropdown menu currently showing "Windows (built-in)".
- Connection name:** A text box containing "LabraNet VPN".
- Server name or address:** A text box containing "sslvpn.labranet.jamk.fi".
- VPN type:** A dropdown menu currently showing "Secure Socket Tunneling Protocol (SSTP)".
- Type of sign-in info:** A dropdown menu currently showing "User name and password".
- User name (optional):** A text box containing "Your LabraNet username".
- Password (optional):** A password field with masked characters (dots).
- Remember my sign-in info:** An unchecked checkbox.

At the bottom right, there are two buttons: "Save" and "Cancel".

Figure 2. Add a VPN connection

LabraNet

Remote access guide

Edit the connection settings by opening *Network and Sharing Center* and choosing *Change adapter settings*. Right-click the VPN Connection and select *Properties*. Navigate to the *Security* tab and apply the following settings.

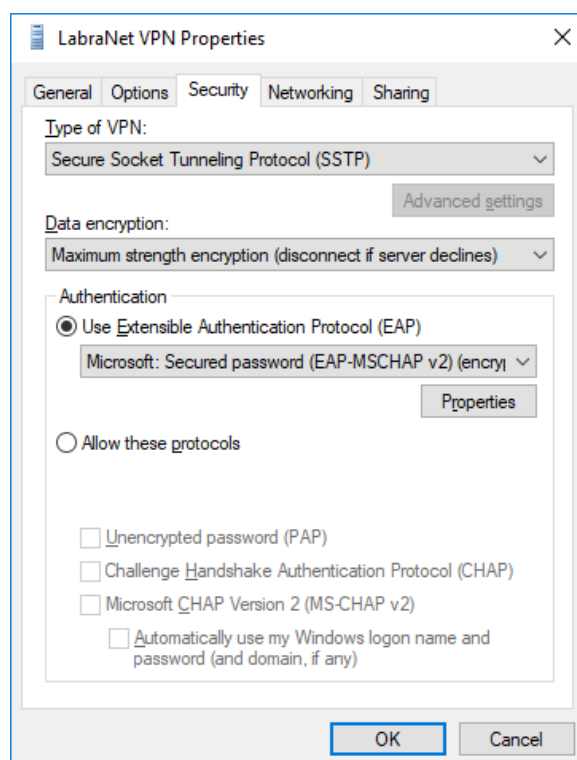


Figure 3. VPN connection security settings

Click *OK*.



LabraNet

Remote access guide

Windows 10 - additional settings

To ensure functioning DNS, more configuration is recommended. Windows 10 uses *smart multihomed name resolution* to optimize name resolution. This feature causes DNS to return incorrect IP addresses for some public LabraNet services when automatic interface metric assigns the LabraNet VPN connection lower *or* equal priority compared to the connecting devices physical network adapter.

For end users, this shows up as LabraNet services (including helpdesk and gitlab) not responding when the VPN tunnel is up. It is possible to correct this either by bumping the VPN connection up in priority or lowering the physical adapters priority. This guide focuses on altering the priority of the VPN connection.

LabraNet

Remote access guide

Open *Network and Sharing Center* and select *Change adapter settings*. This view shows all the network connections your device has.

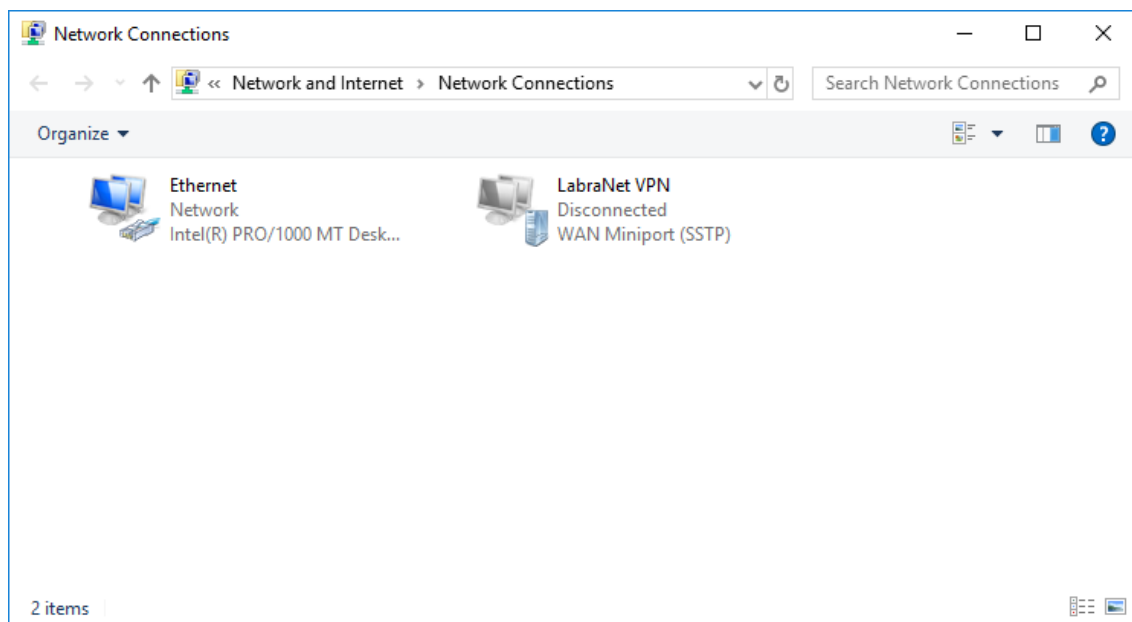


Figure 4. Network adapter settings

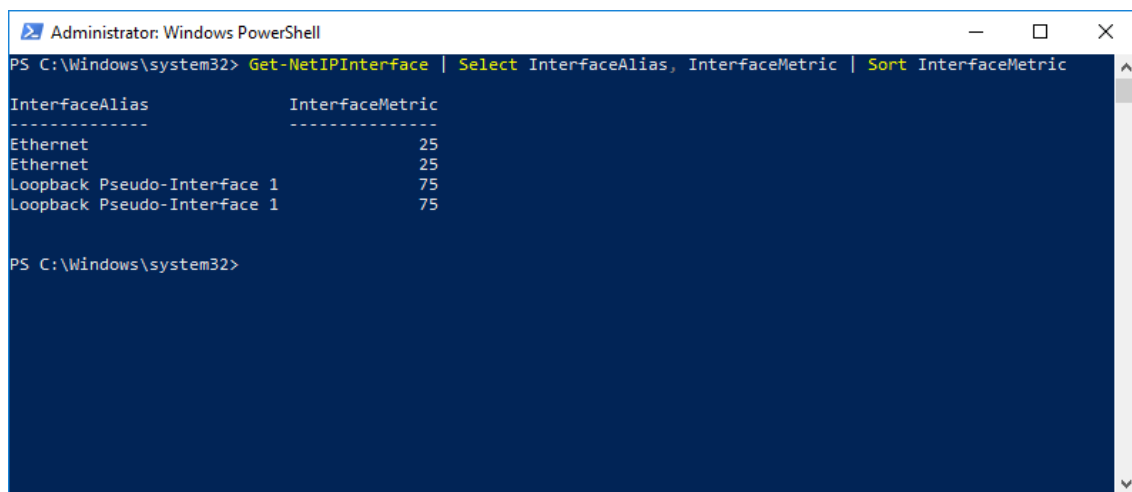
Note that the name of the physical network connection is *Ethernet*. This may vary depending on the number and type of physical adapters, and installed software.

LabraNet

Remote access guide

Now issue the following PowerShell command by opening *Windows PowerShell* and typing in:

Get-NetIPAddress | Select InterfaceAlias, InterfaceMetric | Sort InterfaceMetric

A screenshot of a Windows PowerShell window titled "Administrator: Windows PowerShell". The command entered is "Get-NetIPAddress | Select InterfaceAlias, InterfaceMetric | Sort InterfaceMetric". The output is a table with two columns: "InterfaceAlias" and "InterfaceMetric". The data is as follows:

InterfaceAlias	InterfaceMetric
Ethernet	25
Ethernet	25
Loopback Pseudo-Interface 1	75
Loopback Pseudo-Interface 1	75

The prompt "PS C:\Windows\system32>" is visible at the bottom.

Figure 5. List network interface metrics

Note that the InterfaceMetric value assigned to the connection *Ethernet* is 25 in this example. Please use the lowest number for your active connection as reference point.

Now select the newly created LabraNet VPN connection from *Network and Sharing Center* and select *Properties*. Choose the *Networking* tab and modify both the *Internet Protocol Version 6* and the *Internet Protocol Version 4* connection items (1).

Click open either one by selecting *Properties* (2). Then open the advanced settings by clicking *Advanced* (3). Clear the checkmark from *Automatic metric* and assign a value that is **less** than what the PowerShell command returned (4). This example sets the metric at 15 which is less than the 25 listed for the *Ethernet* connection.

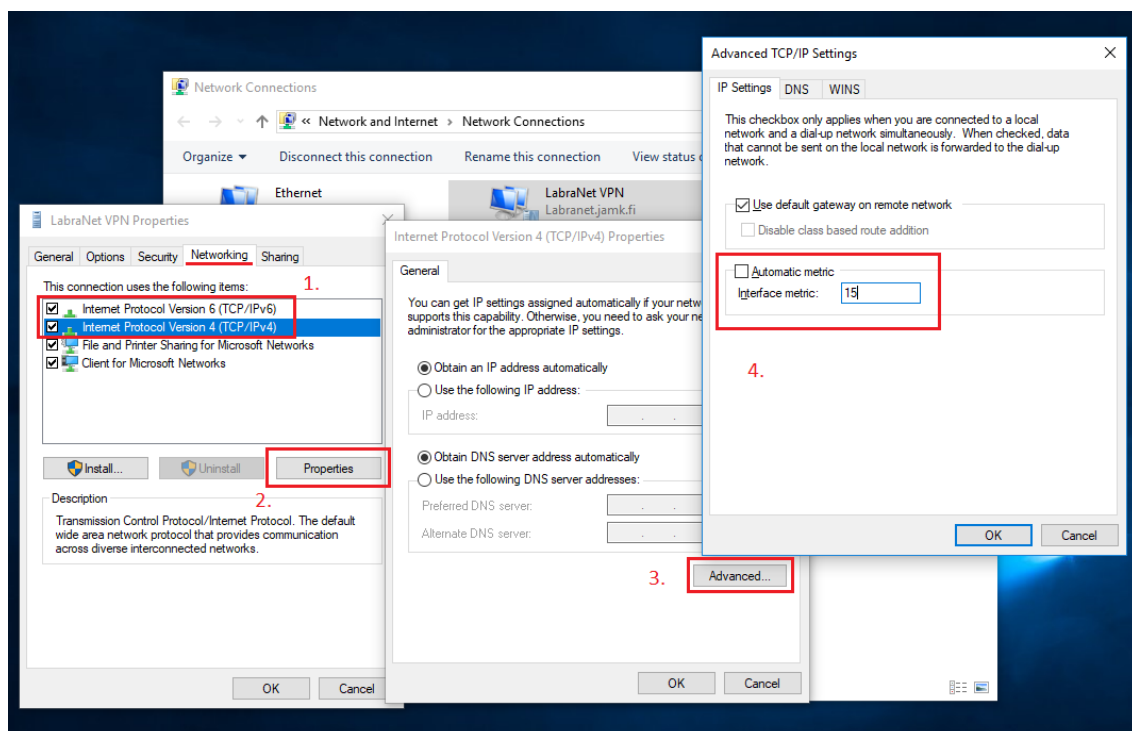


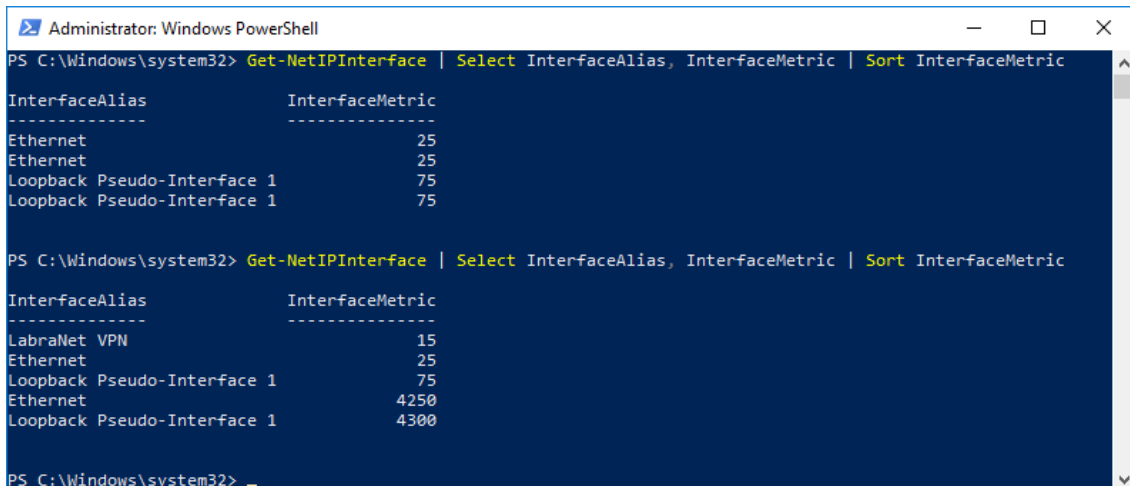
Figure 6. Modify the metric value

Modify both the IPv4 and IPv6 settings the same way and click *OK* at each setting window to save the settings.

LabraNet

Remote access guide

Now connect to LabraNet via the VPN connection and issue the previous PowerShell command again to check that your settings were saved correctly.



```
Administrator: Windows PowerShell
PS C:\Windows\system32> Get-NetIPInterface | Select InterfaceAlias, InterfaceMetric | Sort InterfaceMetric

InterfaceAlias      InterfaceMetric
-----
Ethernet            25
Ethernet            25
Loopback Pseudo-Interface 1  75
Loopback Pseudo-Interface 1  75

PS C:\Windows\system32> Get-NetIPInterface | Select InterfaceAlias, InterfaceMetric | Sort InterfaceMetric

InterfaceAlias      InterfaceMetric
-----
LabraNet VPN        15
Ethernet            25
Loopback Pseudo-Interface 1  75
Ethernet            4250
Loopback Pseudo-Interface 1  4300

PS C:\Windows\system32>
```

Figure 7. Check the values

LabraNet VPN should now be the first connection listed with the lowest *InterfaceMetric* value thus having the highest priority.



LabraNet

Remote access guide

Mac OS X

These configurations have been tested up to version 10.13.4 (High Sierra).

L2TP

Deprecation of iSstp application leaves Mac users without a graphical tool to configure VPN settings. As command line and terminal usage might be problematic to some, LabraNet VPN server has been configured to also use Layer 2 Tunneling Protocol. L2TP has a native client in Mac OS and it is easy to configure. L2TP does not inherently provide confidentiality and therefore it is implemented with IPsec.

The downsides to L2TP/IPsec are problems with Network Address Translation and the usage of a Pre-Shared Key for connection authentication. Generic options for the connection are:

Connection type: L2TP over IPsec

VPN server address: sslvpn.labranet.jamk.fi (should resolve to 195.148.26.226)

Shared Secret: LabraNetVPN

Firewall:

UDP Port 500 (IKE)

UDP Port 4500 (NAT-T)

IP protocol 50 (ESP)

User information:

Account Name: Your LabraNet username

Password: Your LabraNet password

Open *Network Preferences* from *System Preferences* to create the L2TP VPN. Select the + button under the available connections on the left side of the application window.

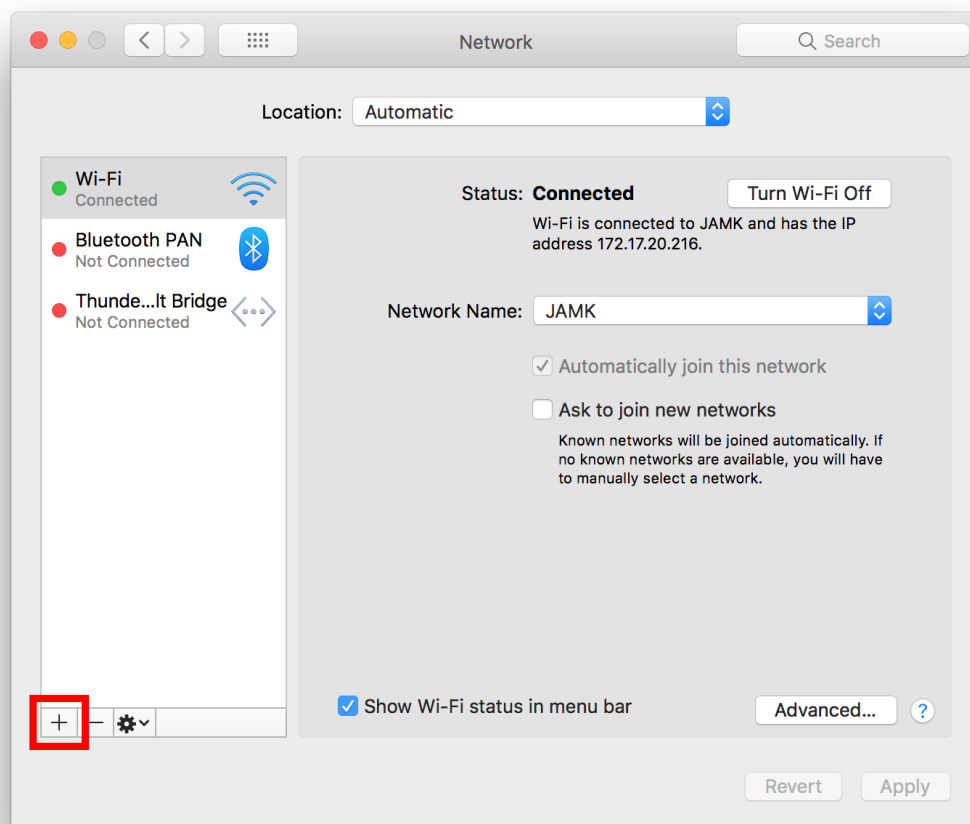
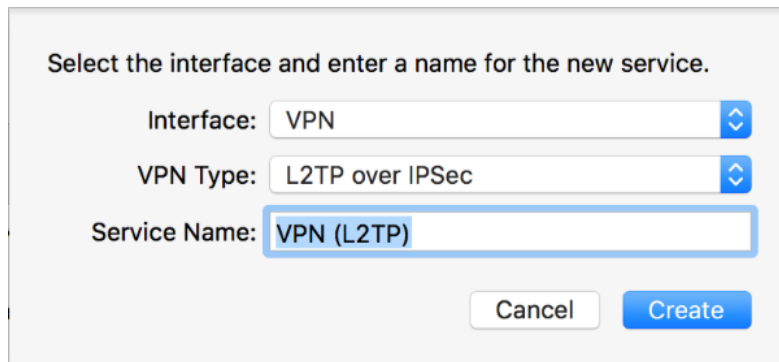


Figure 8. Add a new connection

Fill in the connection type information as pictured below.



Select the interface and enter a name for the new service.

Interface: VPN

VPN Type: L2TP over IPSec

Service Name: VPN (L2TP)

Cancel Create

Figure 9. Connection type

Click *Create*.

Select *Add Configuration* from the *Configuration* dropdown menu to add connection specific configurations.

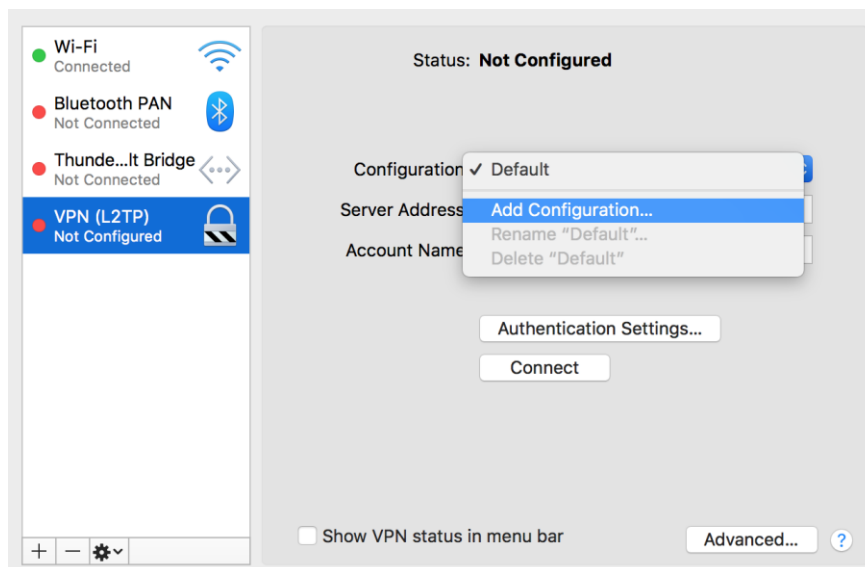


Figure 10. Add Configuration

LabraNet

Remote access guide

Name the configuration *LabraNet* and click *Create* in the popup window. Next, configure the connection. *Server Address* is the name or IP address of LabraNet VPN server and *Account Name* is your personal Student ID.

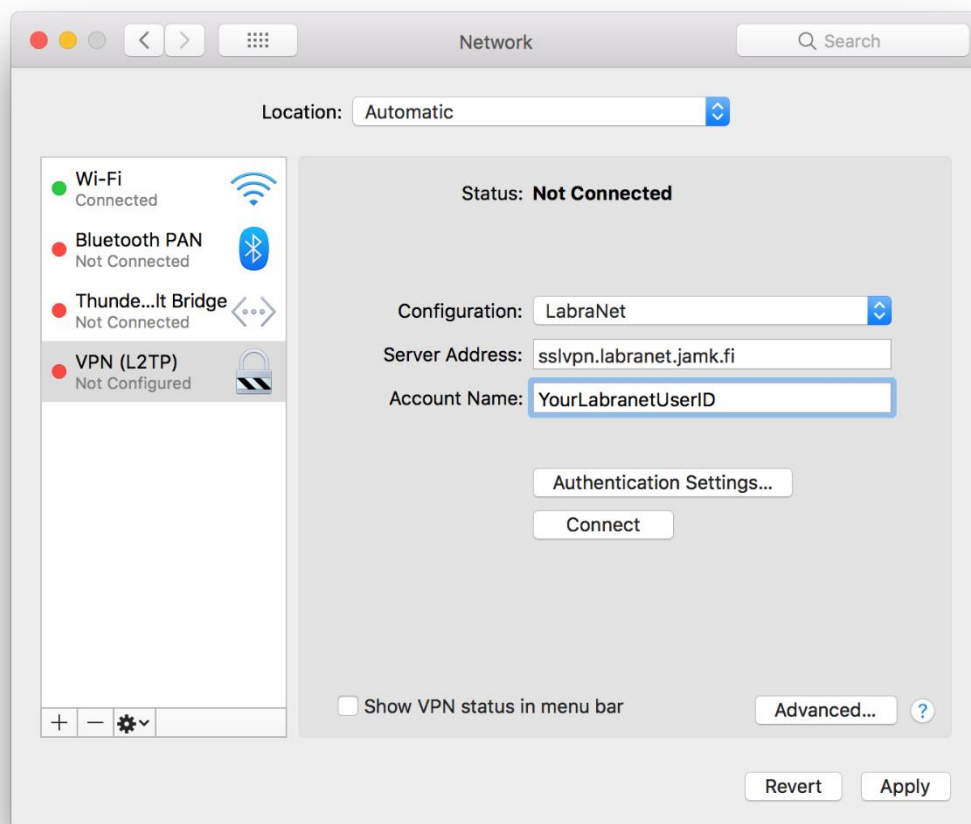


Figure 11. Configure basic settings

LabraNet

Remote access guide

Next, configure *Authentication Settings*. Select *Authentication Settings* menu and fill in your user password to the *Password* field and the *Shared Secret* to the *Shared Secred* field. Your password is your LabraNet password and the *Shared Secret* is “LabraNetVPN” without the quotation marks.

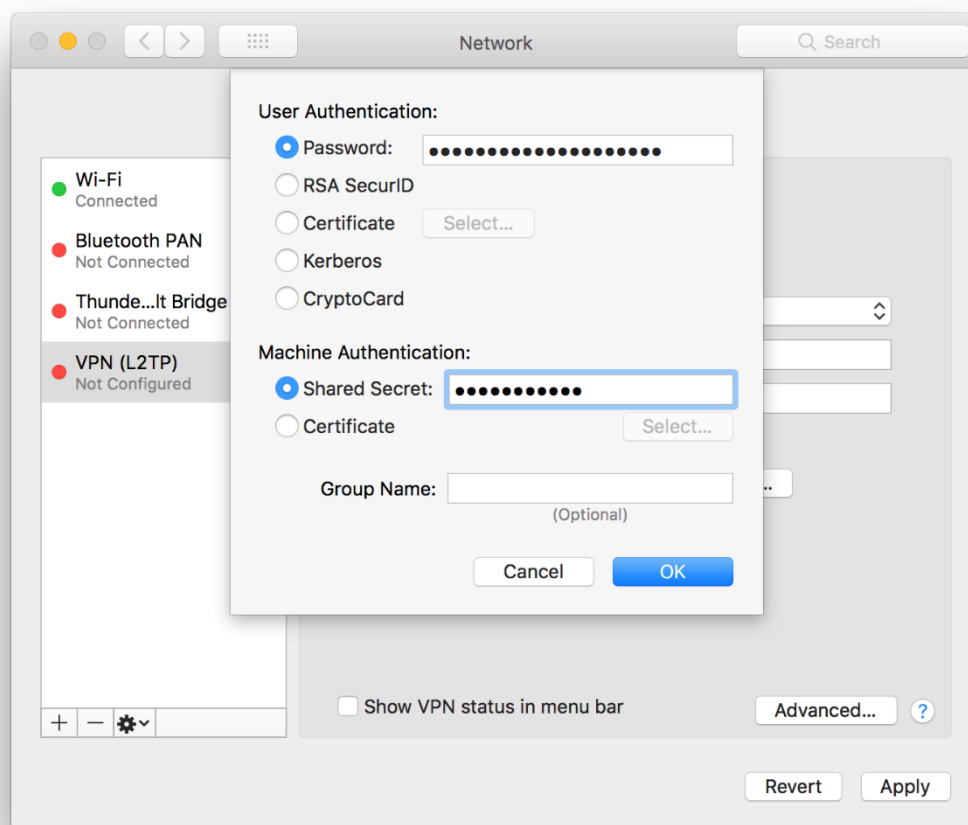


Figure 12. Authentication settings

Click *OK* to close the *Authentication Settings* window and Click *Apply* in the *Network Preferences* window. Your L2TP VPN connection is now ready to be used.

Click *Connect* from the *Network Preferences* window to complete the connection.

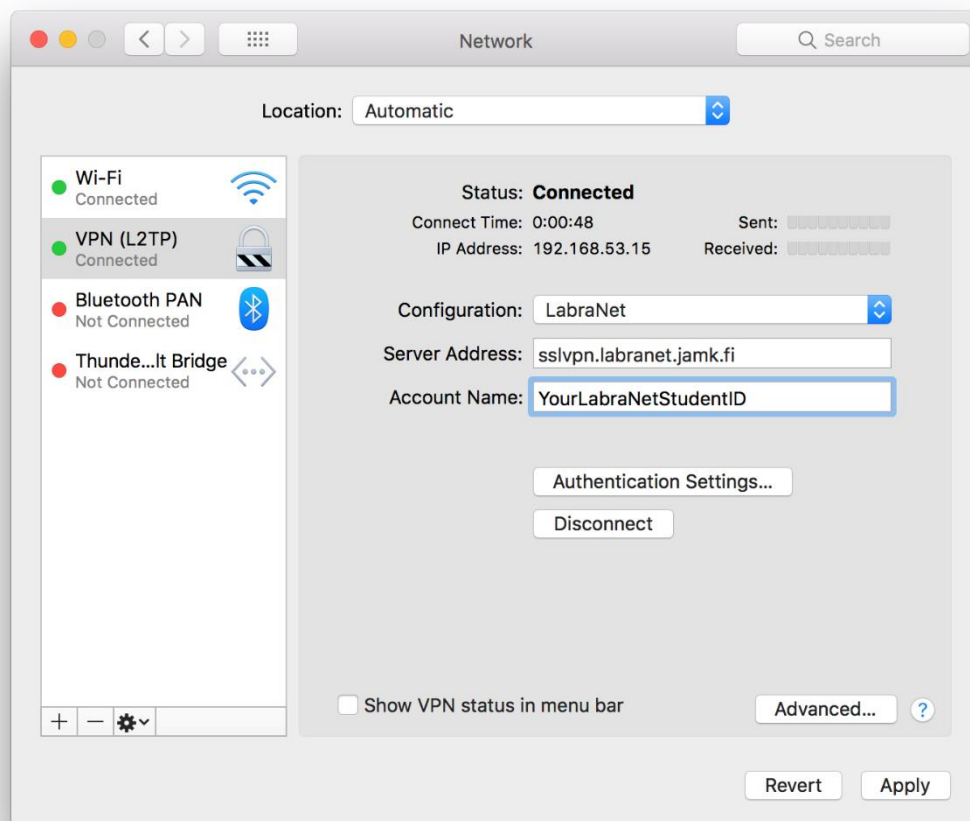


Figure 13. Completed connection

You can disconnect from the VPN connection by clicking *Disconnect*.



LabraNet

Remote access guide

L2TP in Mac OS uses Split tunnel by default. This can be changed from the *Advanced* menu in *Network Preferences* after selecting the VPN connection. Check the *Send all traffic over VPN connection* checkbox to use Full tunnel mode. Full tunnel seems to work best in MacOS, check advanced routing chapter for instructions on how to change this.

Linux (Graphical)

These apply to Linux-distributions which use Network-Manager. In the examples we use Ubuntu 18.04 LTS. Other distributions may use a different style in the UI for Network-Manager, but the basic steps are the same.

The first step is to install sstp-client. This can be done by adding the personal packet archive of the author of network-manager sstp-client.

```
sudo add-apt-repository ppa:eivnaes/network-manager-sstp  
sudo apt-get install network-manager-sstp network-manager-sstp-gnome  
sstp-client
```

Alternatively, you can find the packages here if you want to manually install them.

<https://sourceforge.net/projects/sstp-client/files/>

Open the Network settings and press the highlighted + button to set up the VPN connection.

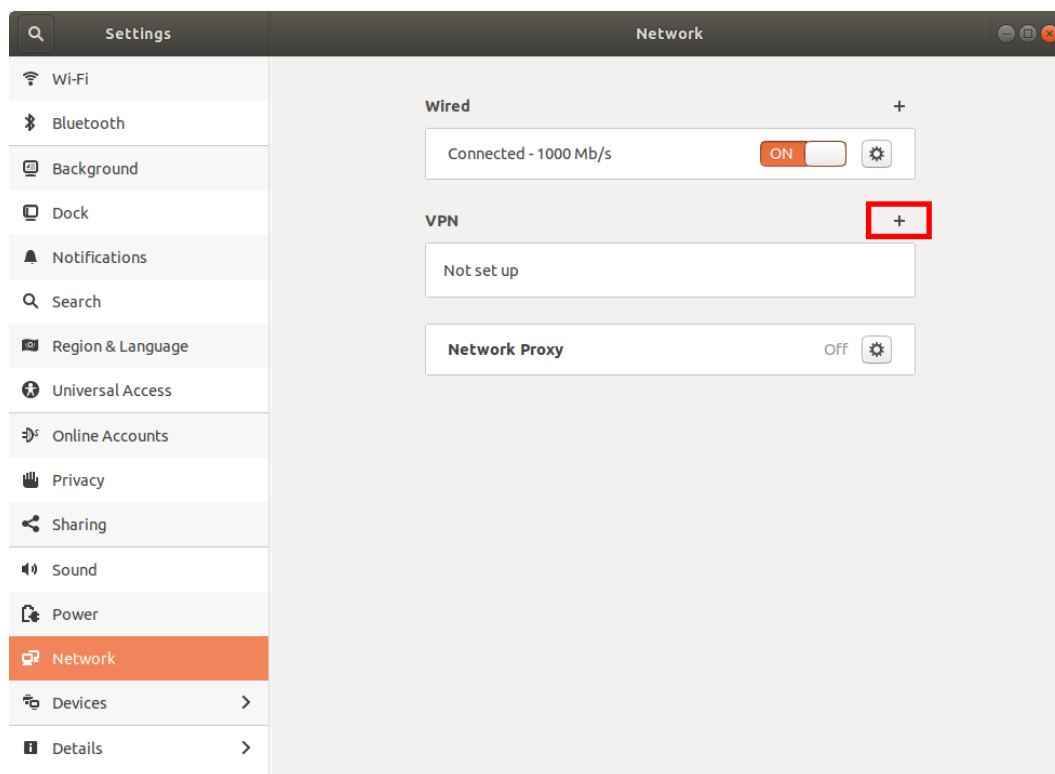


Figure 14. Network settings

Choose *Point-to-Point Tunneling Protocol (SSTP)*.

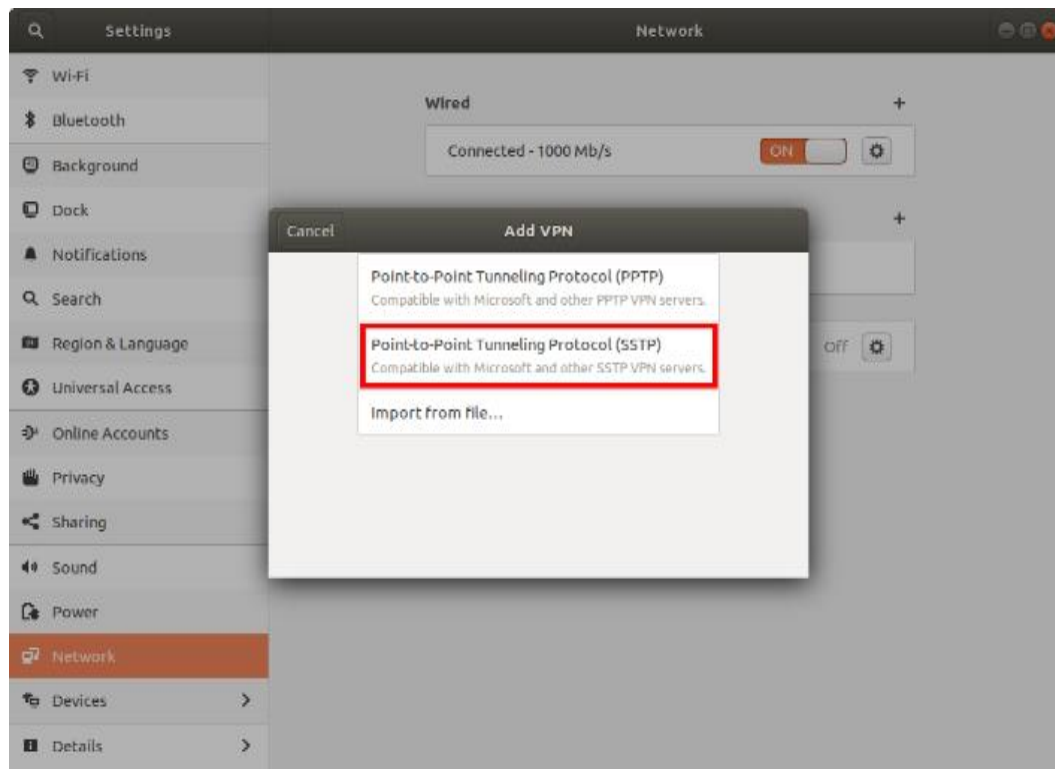


Figure 15. Connection type

On the next dialog, give the connection a name, fill in the gateway and your username and password.

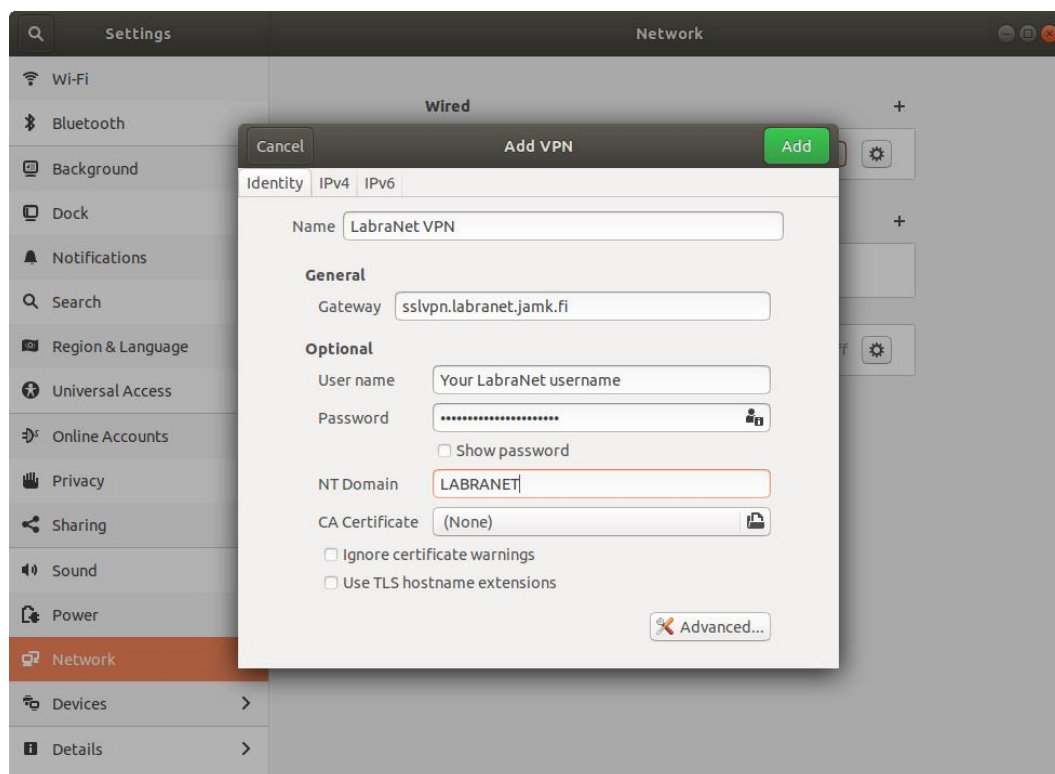


Figure 16. VPN Connection settings

LabraNet

Remote access guide

Next click the *Advanced*-button. From the next dialog, select the following authentication method: *MS-CHAPv2*. You can leave other selections unchecked.

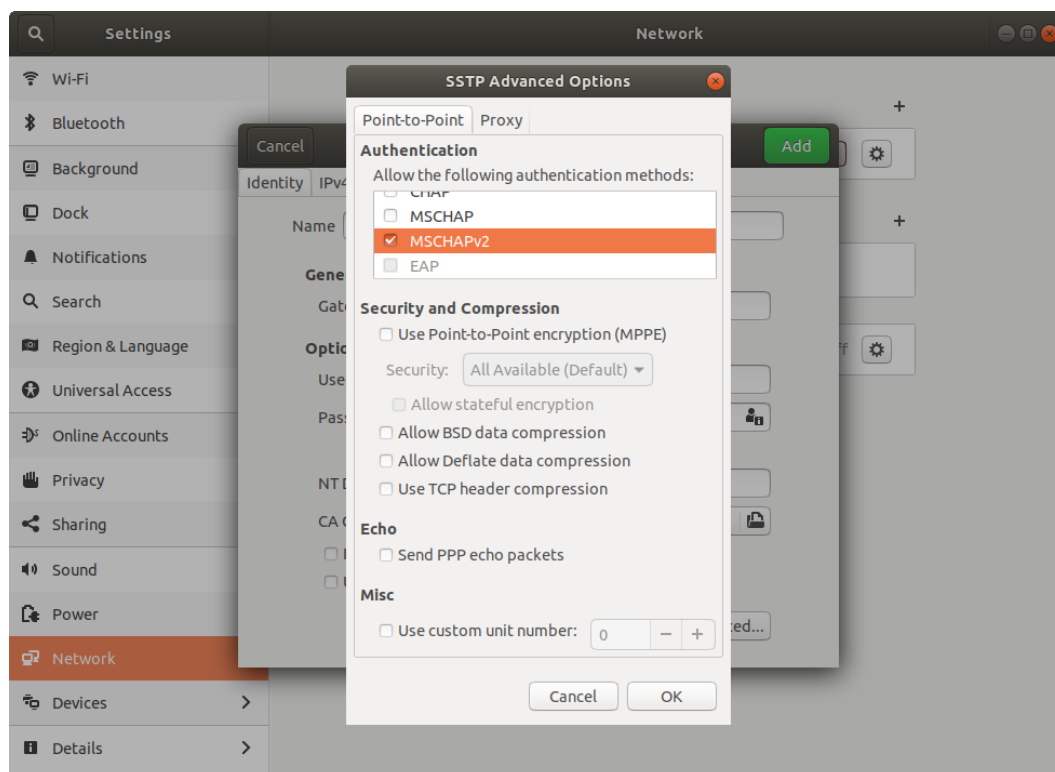


Figure 17. Advanced settings

Click *OK* and *Add*. You can now connect to LabraNet using this VPN connection from the tray applet.

Advanced routing

VPN tunnel can be used in full tunnel or split mode. With full tunneling, all traffic is routed through the VPN connection. In split mode, only traffic to resources in LabraNet networks are routed via the VPN connection.

This behaviour can be changed by enabling or disabling the use of gateway on the VPN connection.

Windows

In Windows operating systems, the default mode is Full tunnel. To change the setting, go to VPN connection Properties and *Networking* tab. Select *Internet Protocol Version 4 (TCP/IPv4)* and click *Properties*. Click the *Advanced* button and on the next dialog, *Use default gateway on remote network*. When the setting is checked, Windows uses Full tunnel mode.

Mac OS X

L2TP in Mac OS uses Split tunnel by default. This can be changed from the *Advanced* menu in *Network Preferences* after selecting the VPN connection. Check the *Send all traffic over VPN connection* checkbox to use Full tunnel mode.

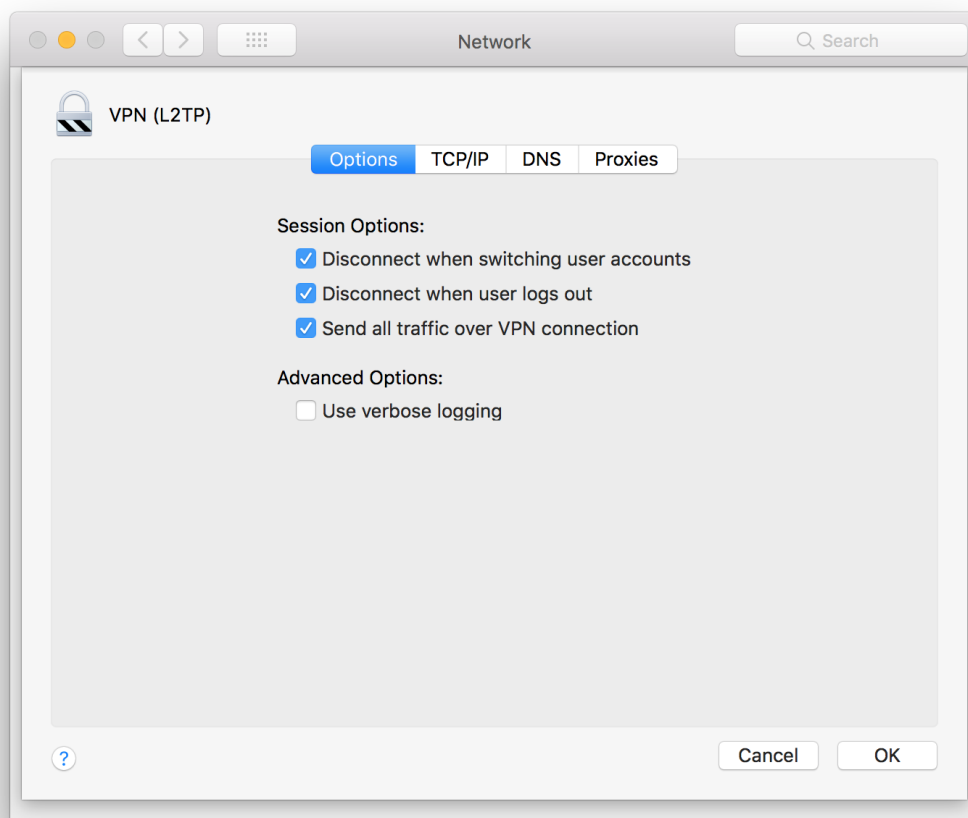


Figure 18. Full tunnel in Mac OS.

Click *OK* and *Apply*.

Linux (Graphical)

The VPN tunnel works best in Full tunnel mode. To change this, edit the *IPv4 Settings* of your VPN connection.

Check the *Use this connection only for resources on its network* checkbox. Per documentation of sstp-client, this is not recommended. When using split tunneling, ensure your distributions dhcp client supports *rfc3442-classless-static-routes option 121*. Otherwise routes to LabraNet services need to be added by hand.

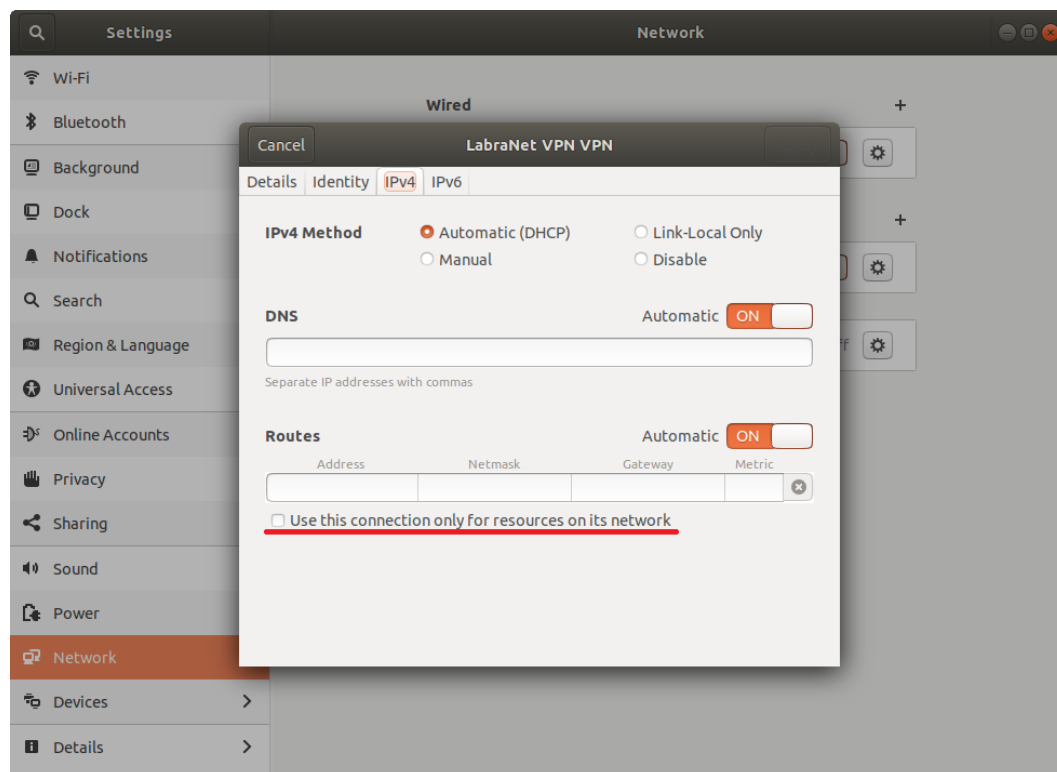


Figure 19. Advanced routing



LabraNet

Remote access guide

Accessing Shares

After successfully connecting to VPN, you can now use shared files in a similar manner as from local LabraNet workstations. Here are guides for connecting to your home folder or any public share.

NOTE: In some cases, the VPN connection DNS servers will not be used immediately. In this case, wait for a few minutes and try again.

Your home folder can be found in the path
`\\storage.labranet.jamk.fi\homes\userid`

You can also use public shares, such as `\\ghost.labranet.jamk.fi\temp`.

You need to authenticate to the shares separately with your LabraNet account information. Provide the username either in format `LABRANET\userid` or `userid@LABRANET`.

Replace the *network-path* with desired network path in the following examples.

More information on accessing your LabraNet shares can be found in <http://student.labranet.jamk.fi/remote-using-your-home-folder/>

Windows

Open *File explorer*. Write the path to the address bar on top of the window. Windows should ask you for your LabraNet username and password.

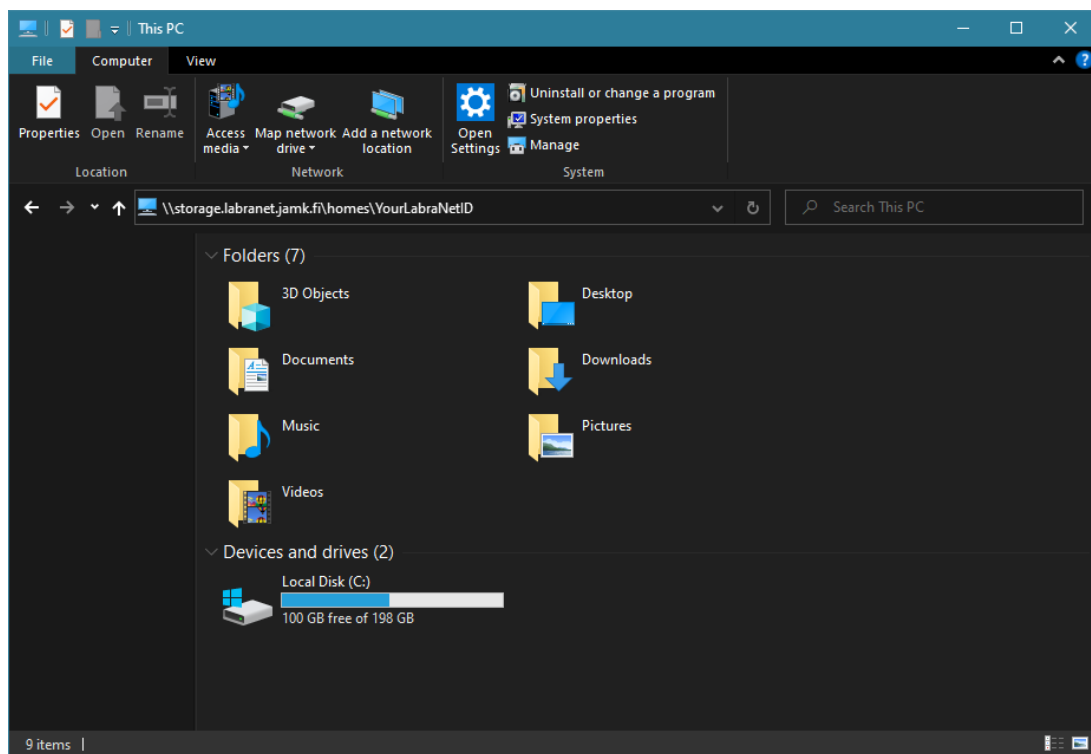


Figure 20. Enter the network path

Mac OS X

Go to Finder and press Cmd+K. Enter the path to the *Server Address* – field as follows *smb://network-path*:

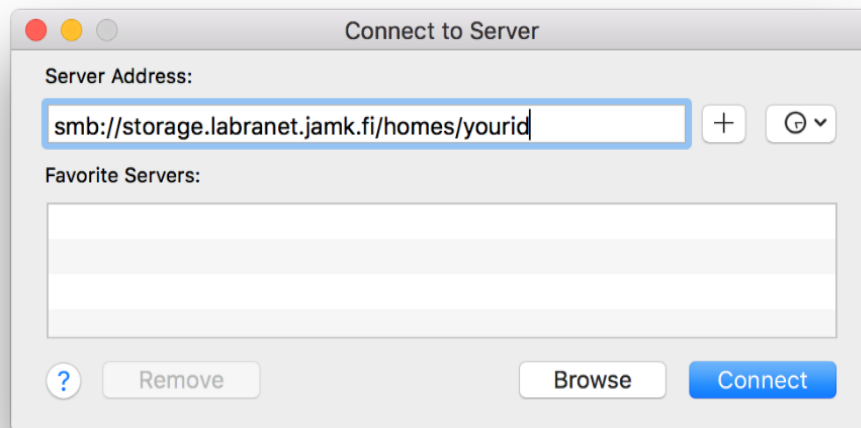


Figure 21. Connect to Server

Some versions of Mac OS X work better with cifs-protocol, path would then be *cifs://network-path*

Click *Connect*. You will be asked for your LabraNet credentials.

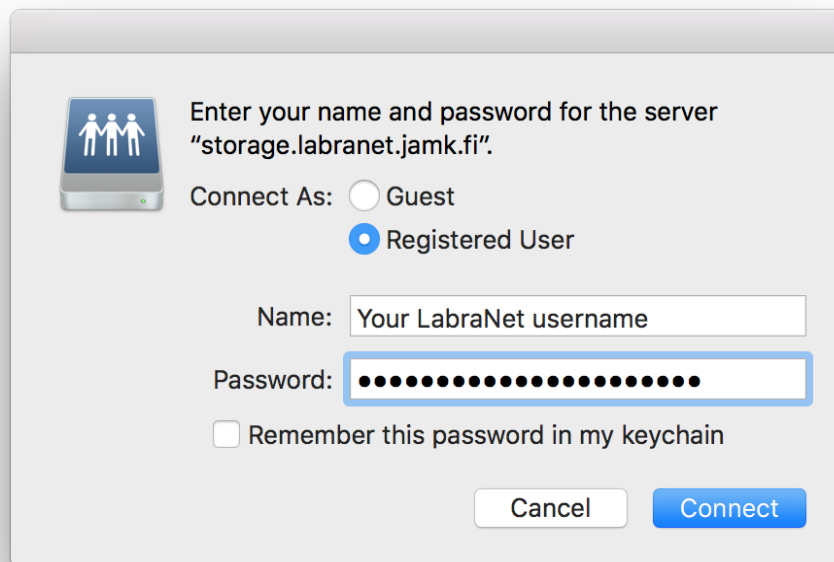


Figure 22. Credentials for user

Linux (Graphical)

NOTE for older Linux distros: Due to being broken, SMBv1 has been disabled. This means you need to connect to shares with a newer version of the SMB protocol. This can be achieved by adding the following options to the *[global]* section of *smb.conf* in */etc/samba/smb.conf*.

client max protocol = SMB3

client min protocol = SMB2

Now you can connect to LabraNet network shares using your LabraNet account information.

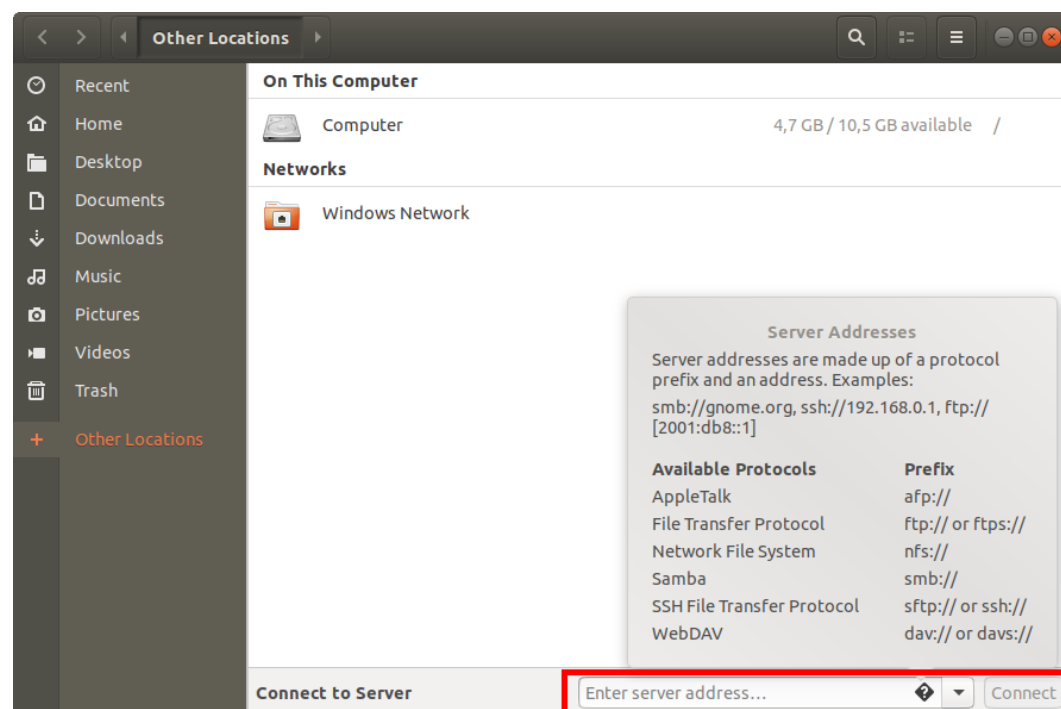


Figure 23. Connecting to server shares

You will then be asked to fill in your LabraNet account information.

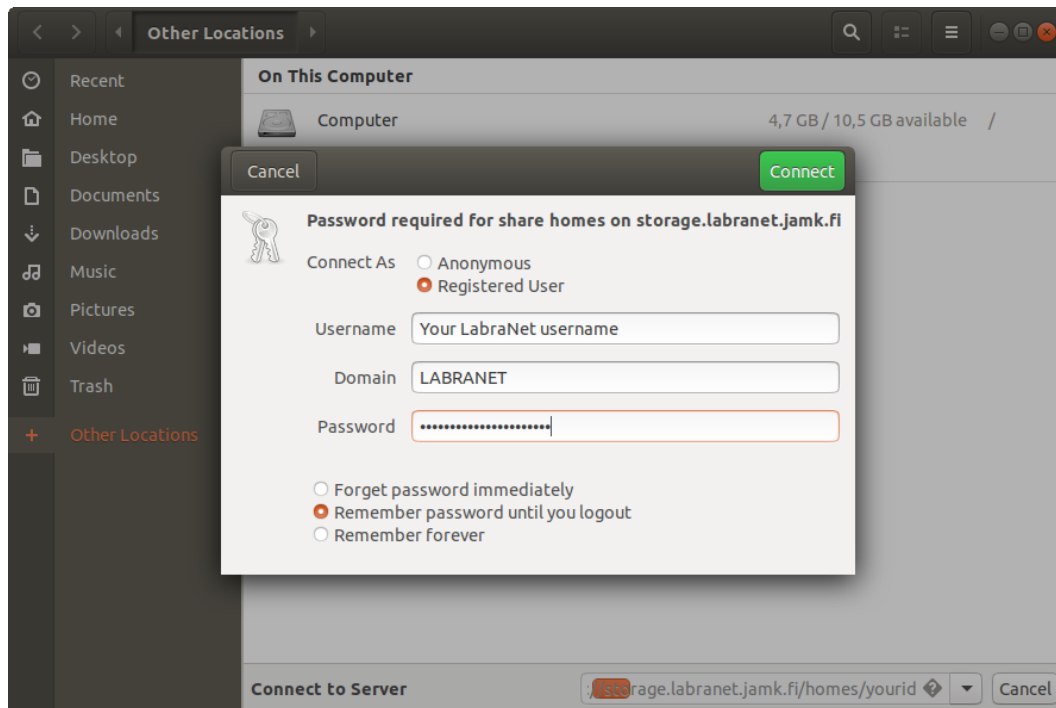


Figure 24. Creating the connection



LabraNet

Remote access guide

Linux (Command line)

Create a mountpoint and ensure *mount.cifs*, *cifs-utils* or equivalent package is installed depending on the distribution you're using.

Mount temporarily with:

```
sudo mount.cifs -o domain=LABRANET,username=<yourid>,vers=2.0  
//network-path /mountpoint
```

Adding permanent mount to */etc/fstab*:

```
//network-path /mountpoint cifs domain=LABRANET,user=userid 0 0
```

You can also use *.smbcredentials* or *cifscreds* to store your credentials in a secure file or system keyring. Check your distributions documentation for more information.